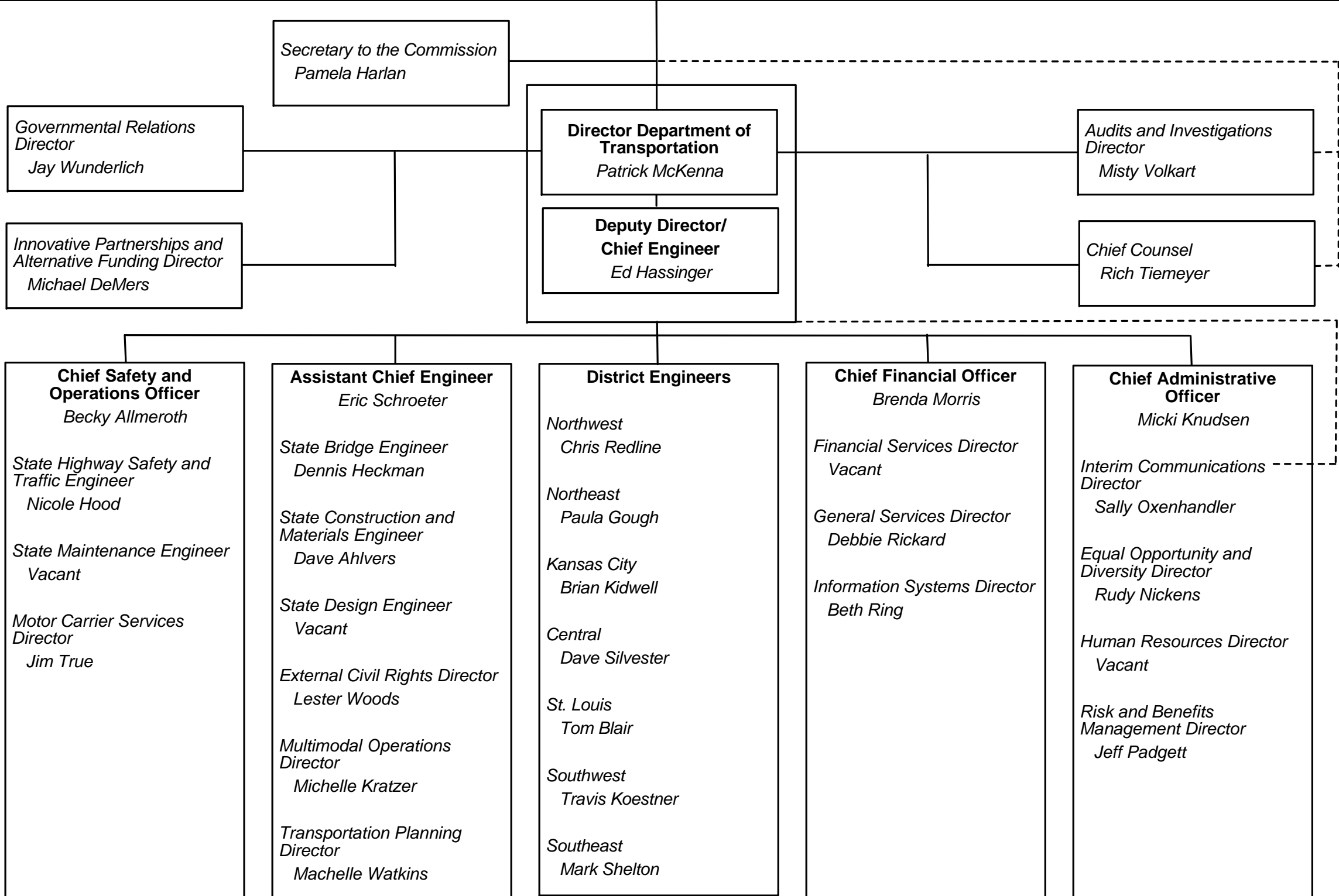


Missouri Department of Transportation

Missouri Highways and Transportation Commission					
Chair Gregg C. Smith Clinton	Vice Chair Michael B. Pace West Plains	Commissioner Michael T. Waters, Jr. Orrick	Commissioner John W. Briscoe New London	Commissioner Robert G. Brinkmann Saint Albans	Commissioner Terry L. Ecker Elmo



SAFETY

SERVICE

STABILITY