

**St. Louis Corps of Engineers /
American Council of Engineering Companies of Missouri/
American Council of Engineering Companies of Illinois
Liaison Committee
MINUTES
Thursday, May 3, 2018
10:30 a.m. to 1:00 p.m.
Crawford, Murphy & Tilly, Inc.
1 Memorial Drive, Suite 500, St. Louis, MO 63102**

Members in Attendance:

St. Louis District COE

Rachel Lopez
Gene Morisani
Susan Wilson
Mandy Yeomans

ACEC/MO

Pam Hobbs
Will Klingner
Rick Lodewyck, Cmte. Chair
Aaron McNeil
Mel Millenbruck
Paul Reitz

ACEC/IL

Raed Armouti
Craig Brauer
Kipkoech Chepkoit
Scott Harding
Todd Welz

Topics of Discussion:

- 1. Update on the levee safety/inspection program:** Rachel Lopez made a presentation about the Levee Safety program. A copy of her presentation is attached hereto.
- 2. Presentation on Metro East:** Wood River construction continues on deep cut-off walls. East St. Louis design complete for deep cut-off walls. Some portions of various projects waiting for funding.
- 3. Any information on the upcoming AE IDIQs:** Contracts are shared among St. Louis, Rock Island, and St. Paul. SF 330s were submitted to St. Paul for the next five-year contract period and are currently under review.
- 4. Any Staffing Changes Made Recently at St. Louis Corps of Engineers District:** John Peukert is moving to Japan next month. Deanne Strauser has retired. Matt Hunn has moved to Galveston.

Small Business Industry Day was held and is expected to be scheduled to occur again next year, probably in a larger venue.

- 5. Update on NGA:** Gene Morisani presented a status report on the NGA project. Gene is with the KC District and his office is at the Service Base. Phase II of the selection was released in March, and technical and price proposals are due this July. Award is scheduled to be made in March 2019. Three AE firms will be selected for CM services, with a total value of \$27 million of shared capacity. Submittals are currently under review. This will be a MATOC process, wherein all the firms under contract will be asked to submit some qualifications (yet to be determined as to size and focus – the Corps looking at strategies to streamline the process) for each task order. There will be some small business set aside construction contracts to be performed design/bid/build, with the design being performed in house by the

Corps or through existing contracts.

- 6. What is the Corps Involvement in the Hurricane Harvey Recovery Efforts:** A handout was distributed that explains the FY 18 Storm Supplemental budget of \$17.4 B.
- 7. Any update on funding the 408 permit review process:** Jeremy Eck is the 408 coordinator.
- 8. Confirm Next Meeting Date and Location:** The next meeting is scheduled for Thursday, August 23 at 10:30 am at SCI's offices in Illinois.

U.S. ARMY CORPS OF ENGINEERS LEVEE SAFETY PROGRAM

Rachel Lopez, P.E.
Levee Safety Program Manager
St. Louis District



Levee Safety Program Mission :
Ensure levee systems provide benefits to the nation by working with sponsors and stakeholders to assess, communicate, and manage flood risks to people, property, and the environment



**US Army Corps
of Engineers.**



U.S. ARMY



TOPICS

1. Levee Safety Program Overview & Risk Communication
2. Policy Updates
3. National Levee Database Upgrade



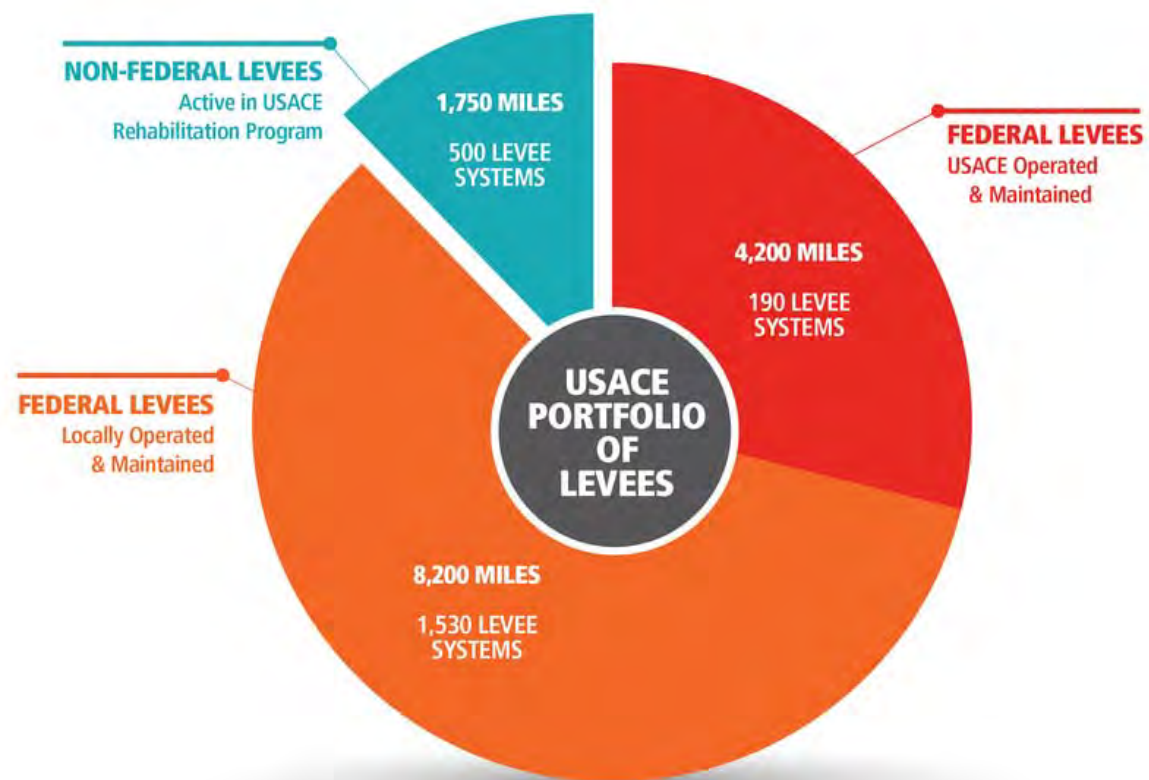
**US Army Corps
of Engineers.**



U.S. ARMY

WHAT IS THE USACE LEVEE PORTFOLIO?

USACE Levee Portfolio comprises of 2,200 levee systems totaling 14,150 miles in length



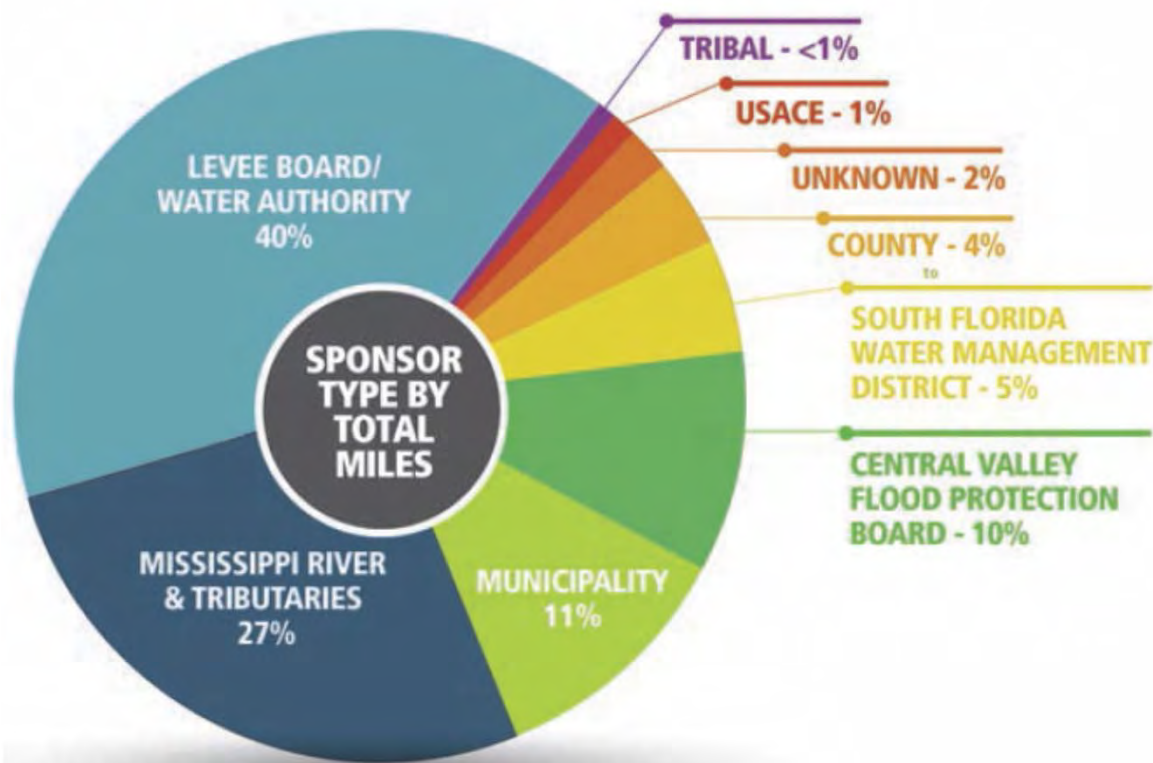
US Army Corps
of Engineers.



U.S. ARMY

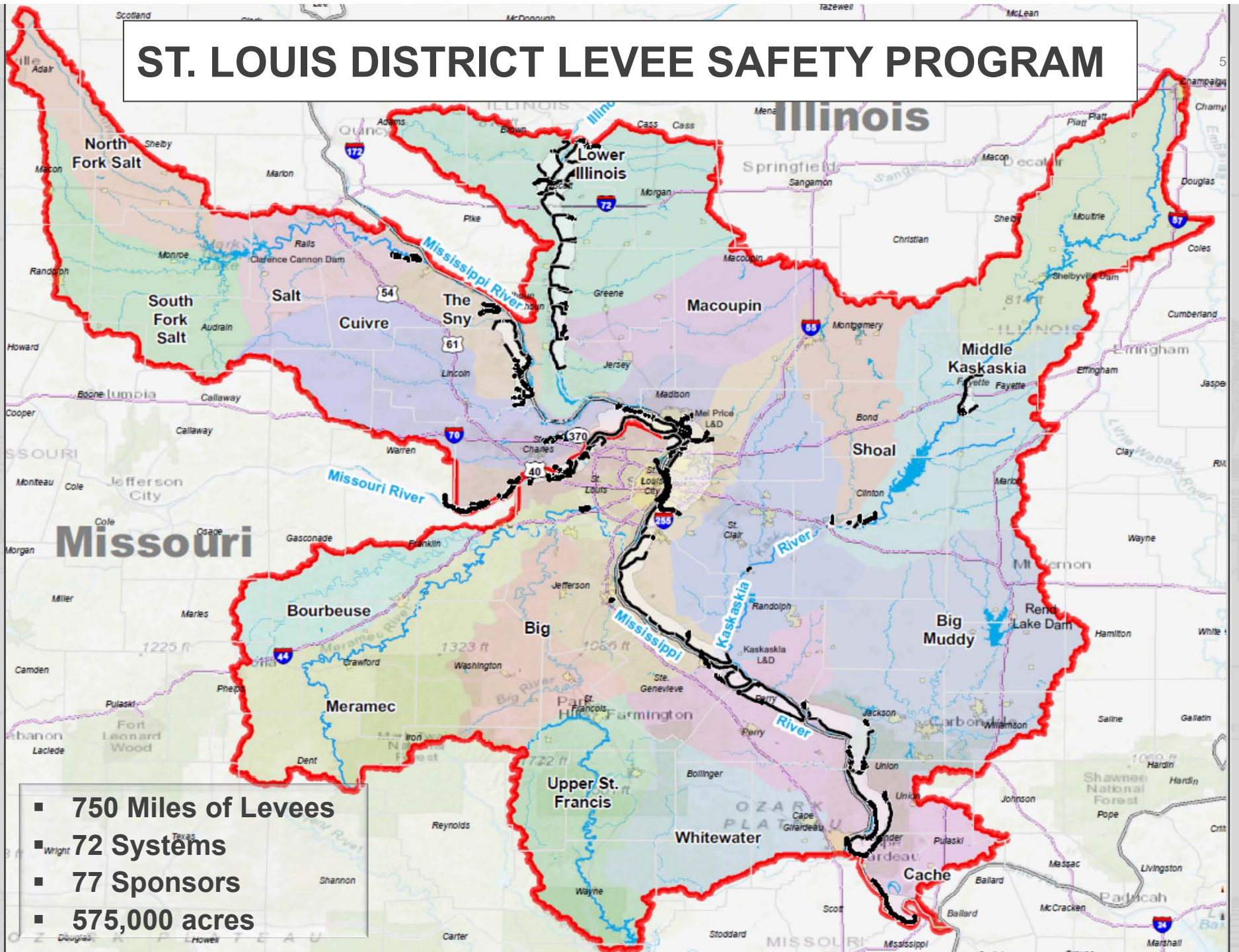
LEVEE SPONSORS

Majority of levee systems within USACE levee portfolio have a levee sponsor



- 1% of the levee miles are operated and maintained exclusively by USACE
- Over 2,000 levee sponsors who operate and maintain levees within the portfolio
- Many sponsors have multiple responsibilities beyond levee O&M

ST. LOUIS DISTRICT LEVEE SAFETY PROGRAM



- 750 Miles of Levees
- 72 Systems
- 77 Sponsors
- 575,000 acres

PATH TO A SAFETY PROGRAM

"Business as Usual"

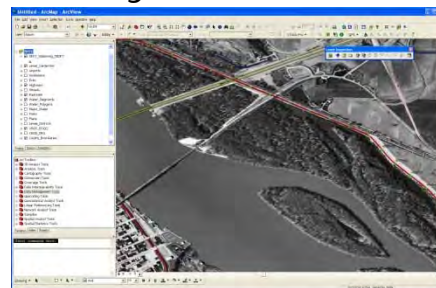
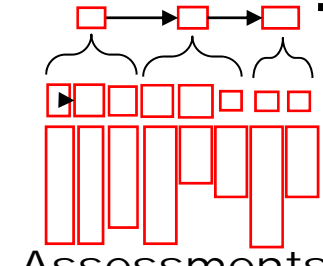
Hurricane Katrina/Rita

FY06 Supplemental

National Levee Safety Act



- Annual Inspections
- Inconsistency across USACE
- No risk communication



Levee Safety Program



LEVEE SAFETY RISK FRAMEWORK

- ❑ National Levee Safety Act of 2007 required:
 - Inventory of the Nation's levees
 - Inspect and assess levees within USACE's authorities



US Army Corps
of Engineers.

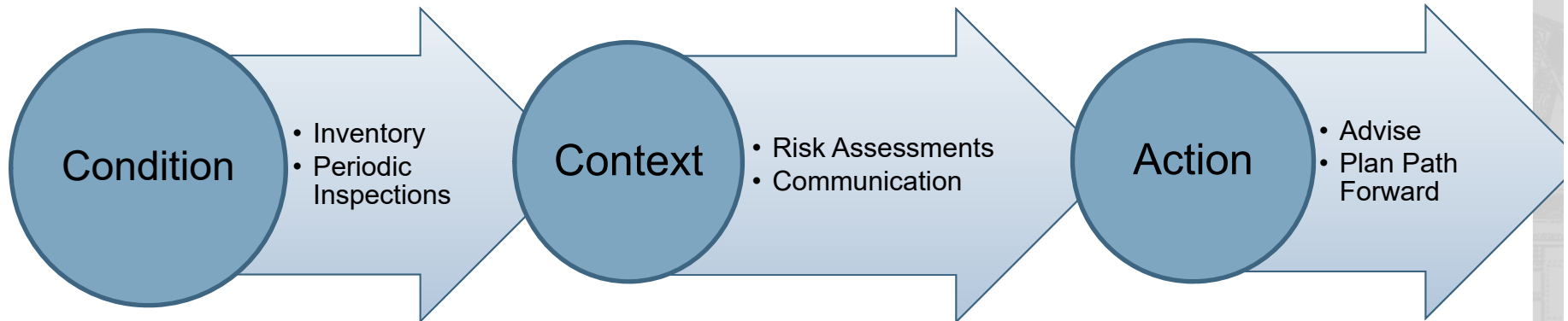


IMPLEMENTING THE RISK FRAMEWORK

**Answer the
Basic Questions:**

Tell the Story:

**Build Shared
Solutions:**



Why the risk framework? Better decisions.

- Conditions of uncertainty
- Focuses on evidence
- Improves objectivity
- Provides consistency in investment decisions



US Army Corps
of Engineers.



U.S. ARMY

LEVEE SAFETY RISK FRAMEWORK

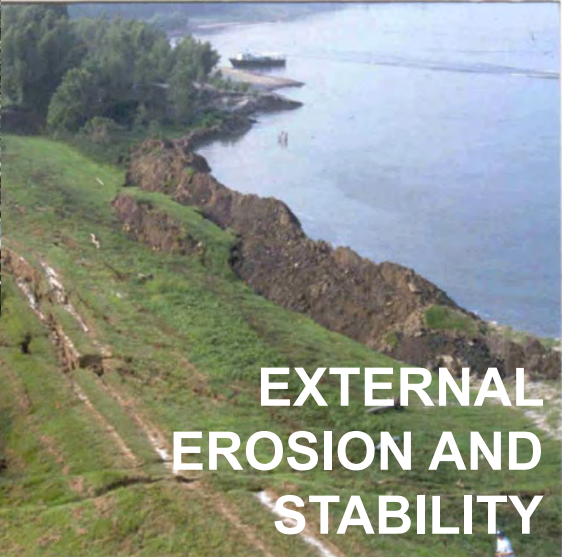


US Army Corps
of Engineers.



U.S. ARMY

WHAT IS DRIVING RISK?



IDENTIFYING AND PRIORITIZING RISK MANAGEMENT MEASURES



US Army Corps of Engineers.



U.S. ARMY

FLOOD RISK MANAGEMENT



US Army Corps
of Engineers.



U.S. ARMY

LEVEE RISK COMMUNICATION



PUBLIC AWARENESS



**US Army Corps
of Engineers.**



U.S. ARMY

VALUE OF RISK DIALOGUE



- Understand how USACE views risk and uses risk to prioritize federal investment
 - Inspection Frequency
 - Planning Studies
 - Flood Damage Repairs
- Improve Understanding of the Benefits and Risks to All Stakeholders
- Help Sponsors develop most effective risk management actions (*engaging others as appropriate*)
 - Structural
 - Interim Repairs
 - Long-term Solutions
 - Non-structural
 - Emergency Preparedness Plans
 - Land Development
 - Building Codes



USACE LEVEE POLICY UPDATES



**US Army Corps
of Engineers.**



U.S. ARMY

LEVEE POLICY UPDATES

Published January 2018:

- Guidance for Emergency Action Plans – EC 1110-2-6074

External Review Period Closed:

- Section 408 / Alterations – EC 1165-2-220

<http://www.usace.army.mil/Missions/Civil-Works/Section408>

External Review this Summer:

- Levee Safety Policy and Procedures – EC 1165-2-218
- Levee Inspection Checklist/Guidelines

Rewrite Ongoing:

- Rehabilitation Program – ER 500-1-1



UNDER CONSTRUCTION



US Army Corps
of Engineers.



U.S. ARMY

NATIONAL LEVEE DATABASE

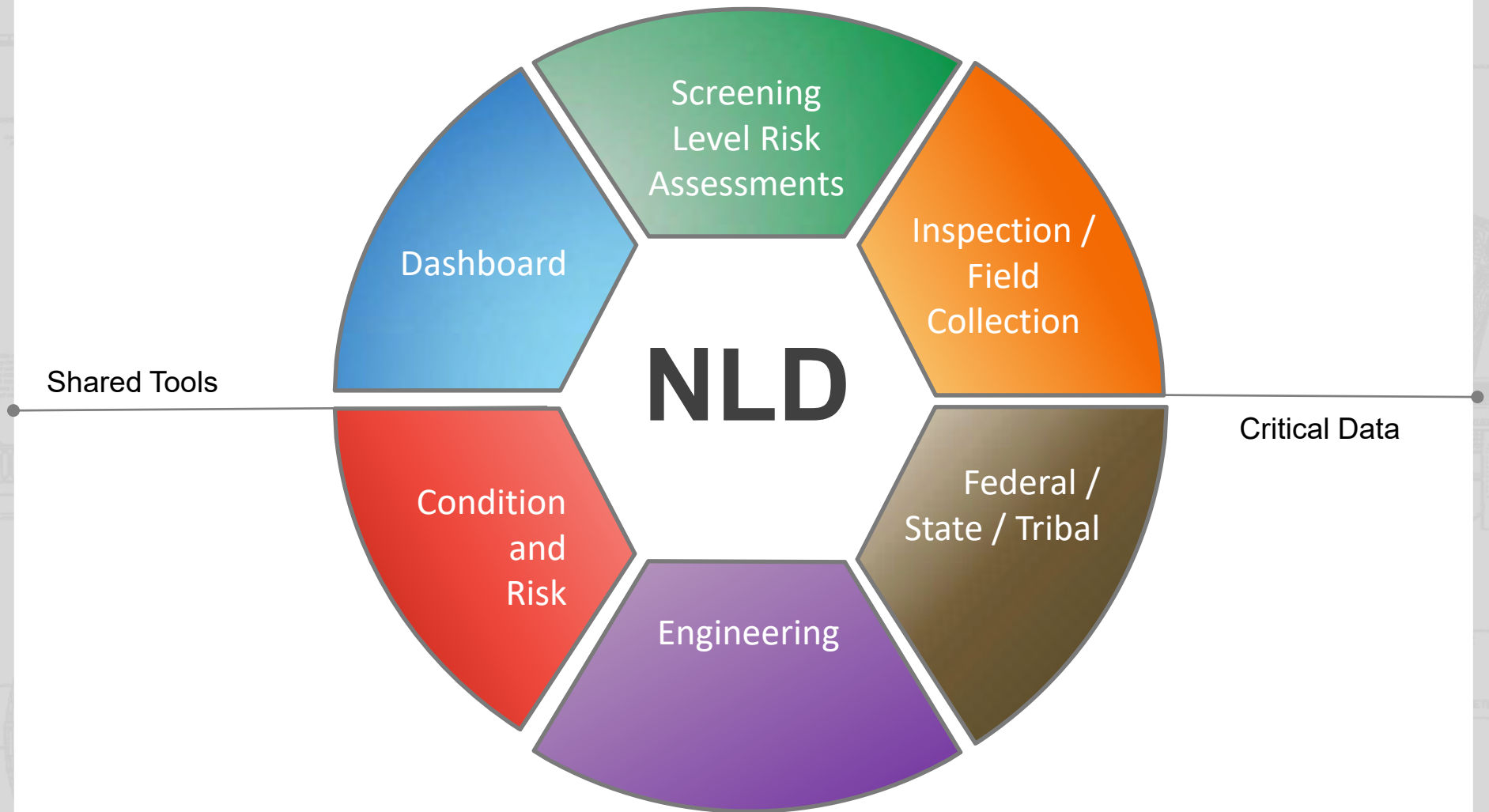


**US Army Corps
of Engineers.**



U.S. ARMY

NATIONAL LEVEE DATABASE



US Army Corps
of Engineers.



U.S. ARMY

National Levee Database

[HOME](#) [ALL LEVEES](#) [ADVANCED SEARCH](#) [MAP](#) [HELP](#) [SIGN IN](#)

Find levees by name, location, and more... [Advanced Search](#)

Levees of The Nation

The Nation

List Levees in The Nation

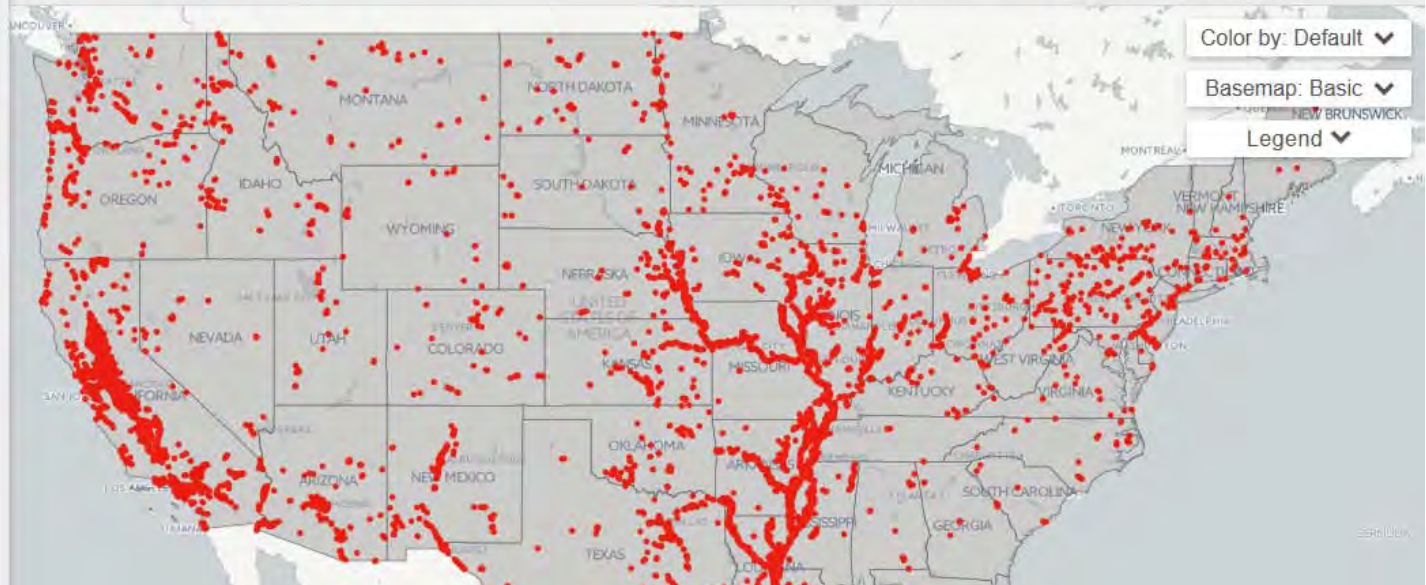
Click on a state below or on the map to zoom in.

States and Counties

Search this list

- Alabama
- Alaska
- American Samoa
- Arizona
- Arkansas
- California
- Colorado
- Connecticut
- Delaware
- District of Columbia
- Florida
- Georgia

11,622 Levee Systems 29,748 Miles of Levees 50,370 Levee Structures 54 years Average Levee Age



Wood River D&LD Upper System

Location East Alton, Madison County, Illinois USACE Districts St. Louis FEMA Regions 5

Info Map

SUMMARY SYSTEM SEGMENTS RISK FEMA - NFIP/FIRM FEATURES PROFILE INSPECTIONS ATTACHMENTS

Project Description

The Upper Wood River Levee System reduces the risk of flooding from the Mississippi and Wood Rivers to the Madison County, IL communities of Alton and East Alton. The system is federally authorized and constructed and locally operated and maintained by the nonfederal Sponsor, Wood River Drainage and Levee District (D&LD). The levee system, originally constructed in the 1950s and 1960s, consists of 5.2 miles of earthen embankment along the Mississippi and Wood Rivers, and the mainline levee coincides with IL HWY 143. Melvin Price Locks and Dam is also adjacent to the mainline levee, and the levee is used to hold in water for the operation of the locks. Within the 1,640-acre leveed area are major highways, an electrical substation, several oil/gas pipelines, residential, commercial and industrial properties. This system provides benefit to the population of

VIEW

Risk Characteristics

VIEW

Levee Safety Action Risk Classification

Moderate

People at Risk 490

Structures at Risk 130

Property Value \$80.2M

Risk Characterization Summary

The Upper Wood River Levee System has prevented Madison County communities from flooding during numerous major flood events. During the record-setting Flood of 1993, significant seepage was observed throughout the system and remains a primary concern. Additionally, underseepage was observed adjacent to the Mel Price Locks and Dam in 2009. It was determined that increased water levels resulting from locks and dam operation caused increased water pressure within the levee foundation at this location, causing increased underseepage concerns. Though significant investments have been made in remediation, including over \$6.4 million by the local sponsor, additional work is needed. Underseepage could contribute to a levee failure if uncontrolled. There is a possibility that in any given year

VIEW

Structure and Features

VIEW

Total Miles

5.02

Length of Embankment (miles)

4.95

Length of Floodwall (miles)

0.07

Avg. Year Constructed

No Data Entered

FEMA - NFIP/FIRM Information

VIEW

Levee System Status on Effective FIRM

No Data Entered

Latest Inspections

VIEW

Segment Name (Date) - Inspection Rating

Wood River D&LD Upper (07/13/2016) - Unacceptable

Wood River D&LD Upper (08/27/2015) - Minimally Acceptable

Wood River D&LD Upper (08/30/2011) - Minimally Acceptable

Wood River D&LD Upper (08/27/2010) - Minimally Acceptable

Key Documents

VIEW

Levee System Summary

↓

PI Executive Summary

↓

Segments

VIEW

Wood River D&LD Upper



<https://levees.sec.usace.army.mil>



US Army Corps of Engineers.



U.S. ARMY

QUESTIONS?



US Army Corps
of Engineers.



U.S. ARMY

FY 18 Storm Supplemental: \$17.4B

- **Investigations → \$135m**
 - Initiate and/or Complete Current/Future Auth Studies, 100% Fed
 - \$75m for HIM Impacted States + \$60m for Other Impacted States
- **Construction → \$15.1B**
 - To Construct, Rehab or Repair Damages
 - \$15B to Construct FRM Projects (Already Auth; Chief's Report a/o 9 Feb; Future Auth in Invest)
 - \$10.4B for HIM Impacted States, PR/VI at 100% Fed; \$4.6B for Other Impacted States
 - 902 Limit Waived, Completed at 100% Fed with Any NF Cost Share Paid Over 30 Years
 - Up to \$50m for FRM CAP Projects
- **MR&T → \$770m**
 - To Construct, Rehab or Repair Damages
 - \$400m to Construct FRM Projects (Already Auth and/or Future Auth in Invest)
- **O&M → \$608m**
 - To Dredge Fed Nav Channels and Repair Damages
- **FCCE → \$810m**
 - To Prepare for and Support Emergency Operations
 - Includes Auth Shore Protection Projects to Full Project Profile at Full Federal Expense
- **Expenses → \$20m**
 - To Administer and Oversee Execution of Emergency Supplemental Funds
 - Will Need to Carry Funded MSC/HQ Activities Over 3-5 Years



U.S. ARMY

