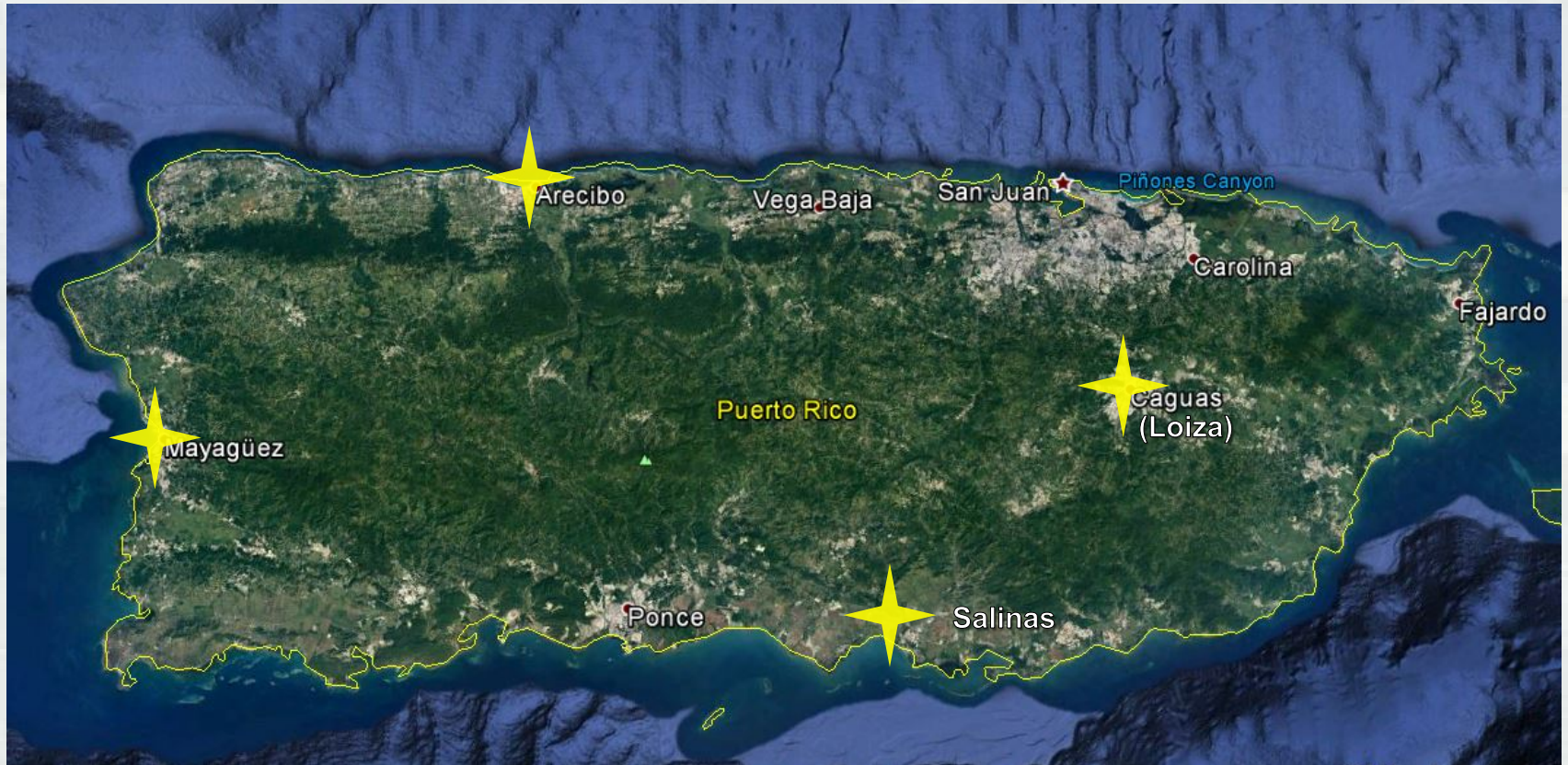


**St. Louis District Corps of Engineers /
American Council of Engineering Companies of Missouri /
American Council of Engineering Companies of Illinois Liaison Committee
- MINUTES -
Thursday, January 10, 2019
Location: SCI Engineering, Inc.
650 Pierce Boulevard, O'Fallon, IL 62269**

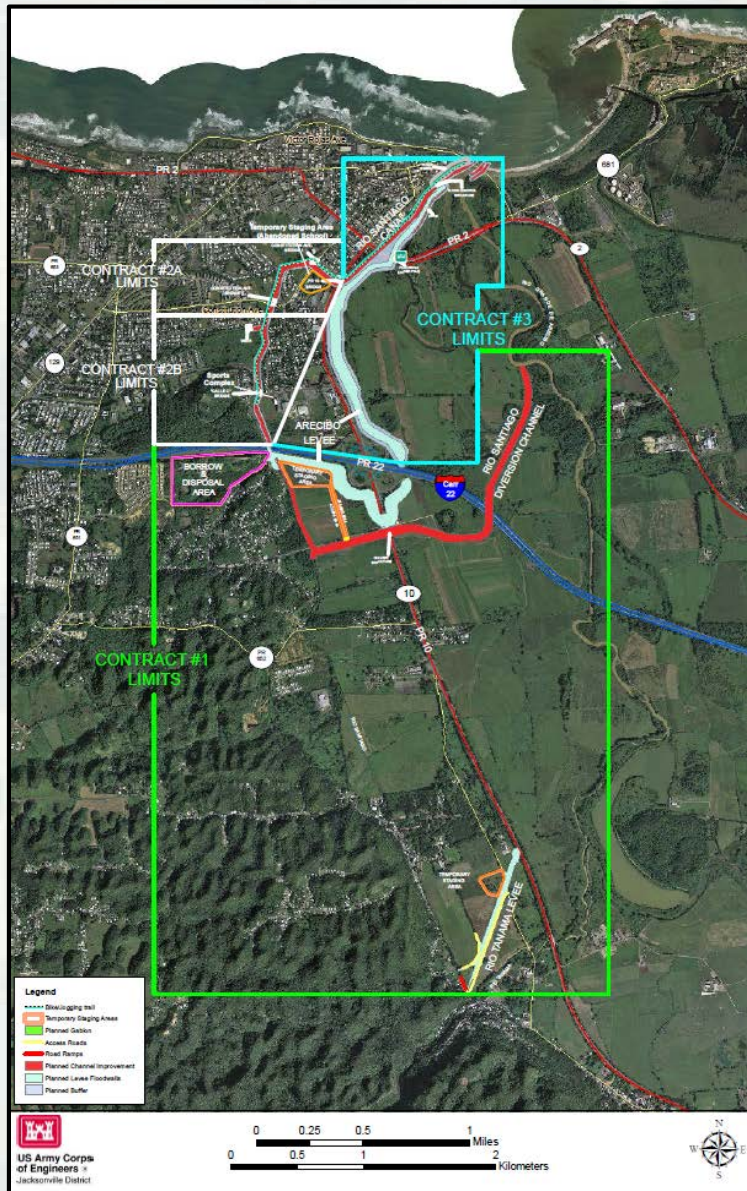
Attendees:	<u>St. Louis District COE:</u> Don Duncan Rob Gramke Jose Lopez	<u>ACEC Missouri:</u> Mark Bross Karen Frederick Joe Hagerty Rick Lodewyck John McEnery Steve Rhoades Monica Zidaru Bruce Wylie	<u>ACEC Illinois:</u> Kip Chepkoit Lori Daiber Shelley Dintelman Scott Harding
-------------------	---	--	---

- 1. Update on Distribution of Supplemental Funding**
Reviewed projects slated for Puerto Rico. Presentation is attached. Mostly levee projects.
(<https://www.usace.army.mil/Media/News-Releases/News-Release-Article-View/Article/1567778/us-army-corps-of-engineers-identifies-long-term-disaster-recovery-projects-and/>)
- 2. Update on Projects Planned to be Completed in Puerto Rico**
Cultural resource concerns by tribes are slowing down approval process. There are 28 tribes impacted by St. Louis District.
- 3. Change to Corps Staff to Engineering Community & Other Changes**
Rob Gramke has replaced Danny McClendon for regulatory permitting.
- 4. Update on Waters of the US Status**
EPA is the enforcer. Handed out documents – “Proposed Revised Definition of Waters of the United States” and “Proposed Revised Definition of Waters of the United States – Economic Analysis”. Hoe to finalize new rule by end of 2019.
- 5. Will St. Louis District be Involved in VA John Cochran Major Construction Project?**
District recently received \$95 million for levees in East St. Louis area. Possibly use an ID/IQ contract. Will design to 500-year flood event. District recently chose 3 design teams for 5 year - \$10M per year ID/IQ contracts.
- 6. How Does the Government Shutdown Affect the Corps’ Mission?**
Not directly because they got authorization before the shutdown started. Can’t get data from other sources.
- 7. Next Meeting Date and Location**
Civil Design, Inc. volunteered to host the next meeting. It will be held at CDI’s St. Louis office on April 25, 2019, beginning at 10:30 a.m. Agenda and directions will be forwarded prior to the meeting.

Location Map



Río Grande de Arecibo Flood Control Project



Río Grande de Arecibo, PR - The recommended plan combines a floodwall and two miles of levee along the Arecibo River; channel improvements, a plug, and channel diversion on the Santiago River; and a short levee on the Tanamá River.

- Sponsor - Puerto Rico Department of Natural and Environmental Resources
- Cost Estimate - \$82,900,000 (100% Federal)
- Project Authorized

Completed Project:

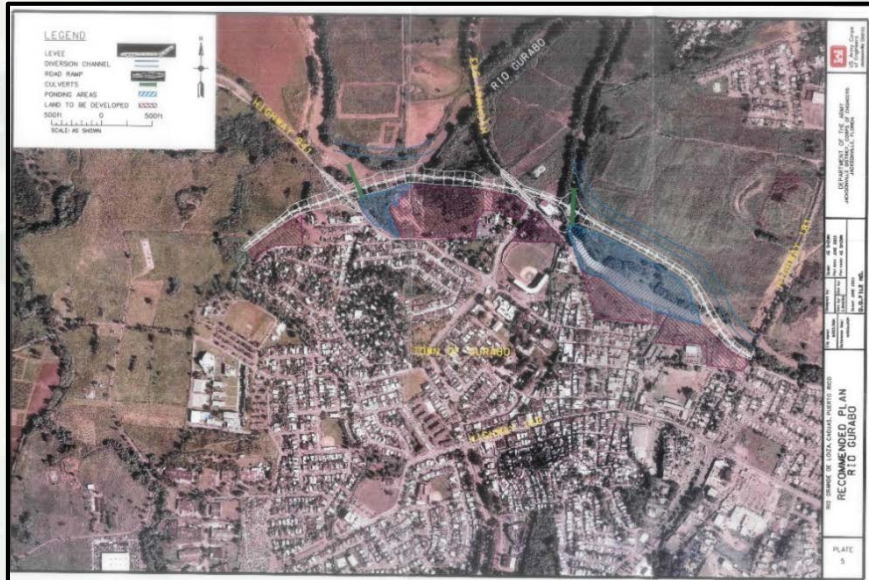
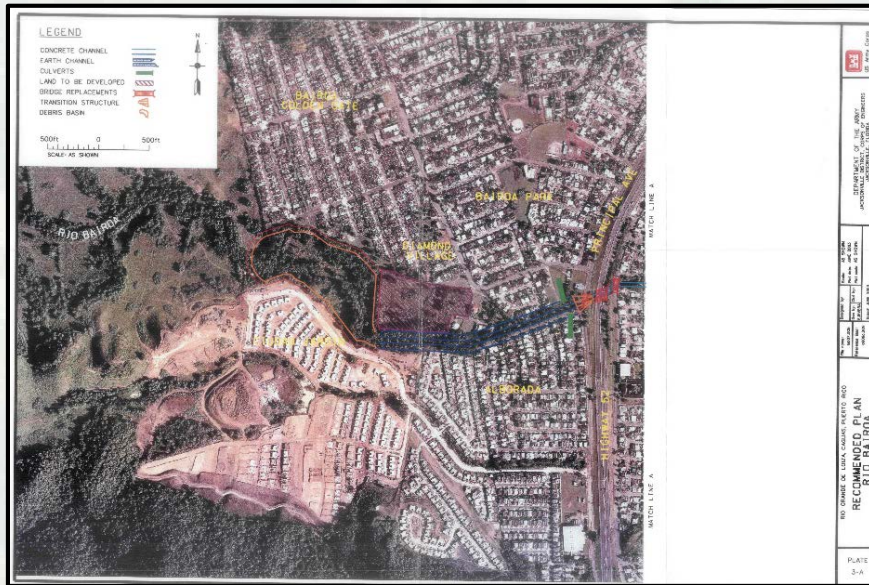
- Contract 1** – The Arecibo Cloverleaf and Tanamá Levees and the Río Santiago Upper Reaches Diversion Channel
- Completed 10 January 2012

Remaining Project:

- Contract 2** – Río Santiago Lower Reaches Channelization, replacement of three existing bridges, 1 culvert and 1 weir structure
- P&S along with Real Estate Parcel Maps completed in 2008.
- Contract 3** – A floodwall and levee along the Arecibo River, a rubble mound breakwater, and mitigation for the loss of environmental habitat



Río Grande de Loiza Flood Control Project



Río Grande de Loiza, Flood Control Project - The authorized plan of improvement includes channelization of Rio Bairoa and Rio Caguitas and levees along the Rio Grande de Loiza and Rio Gurabo to protect urbanized areas.

- Sponsor - Puerto Rico Department of Natural and Environmental Resources
- Cost Estimate - \$200,000 for the validation report and \$250,000,000 project estimate (100% Federal)
- Project currently not Authorized

Contract 1 - Rio Bairoa – 2300 feet downstream of PR Highway 30 Bridge and ends 1902 feet upstream of PR Highway 52.

- Approximately 1.83 miles of channel
- 17 acres debris basin
- 10.5 acres ponding area
- 7 Bridge Replacements
- Seven flap-gated culverts
- Two Stilling Basin – high velocity to low velocity

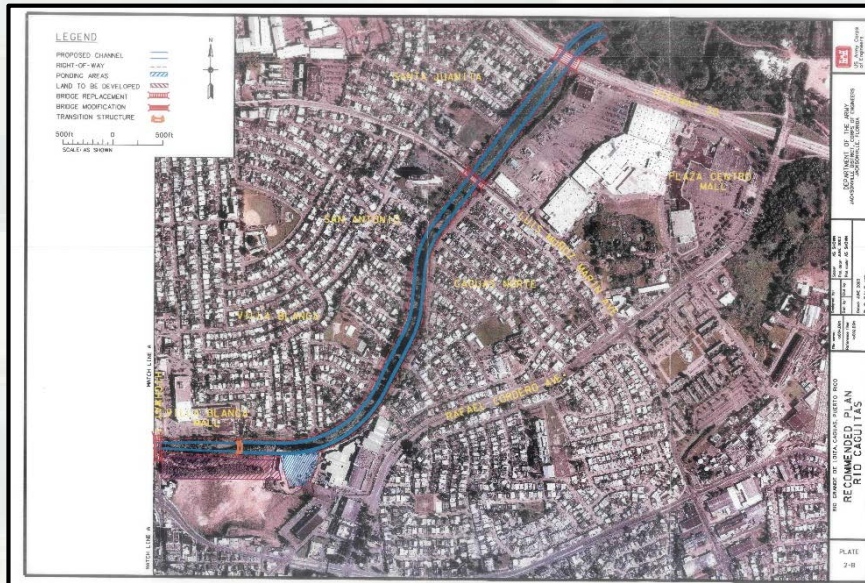
Contract 2 - Rio Gurabo – From the western tip of the Villa Alegre Community and extend upstream along the south bank bordering the urban limits to end at PR HWY 181.

Approximately 1.1 miles of levees –

- The Gurabo Levee
- 0.43 miles of channel
- 14.1 acres for two ponding areas
- A bikeway on the levee for 1.5 miles
- Two flap-gated culverts



Río Grande de Loiza Flood Control Project



Contract 3 - Rio Caguitas – 500 feet downstream from the PR 30 Bridge and traveling upstream to the debris basin at PR 784 bridge.

- Approximately 2.34 miles of channel –
- 24 acres debris basin
- 4 Bridge Placements
- Junction box - Los Muertos Tributary
- Stilling Basin – concrete to earth/gabions
- Relocation of several major water supply, sewer, cable TV, telephone and power lines that cross in the vicinity of most bridges

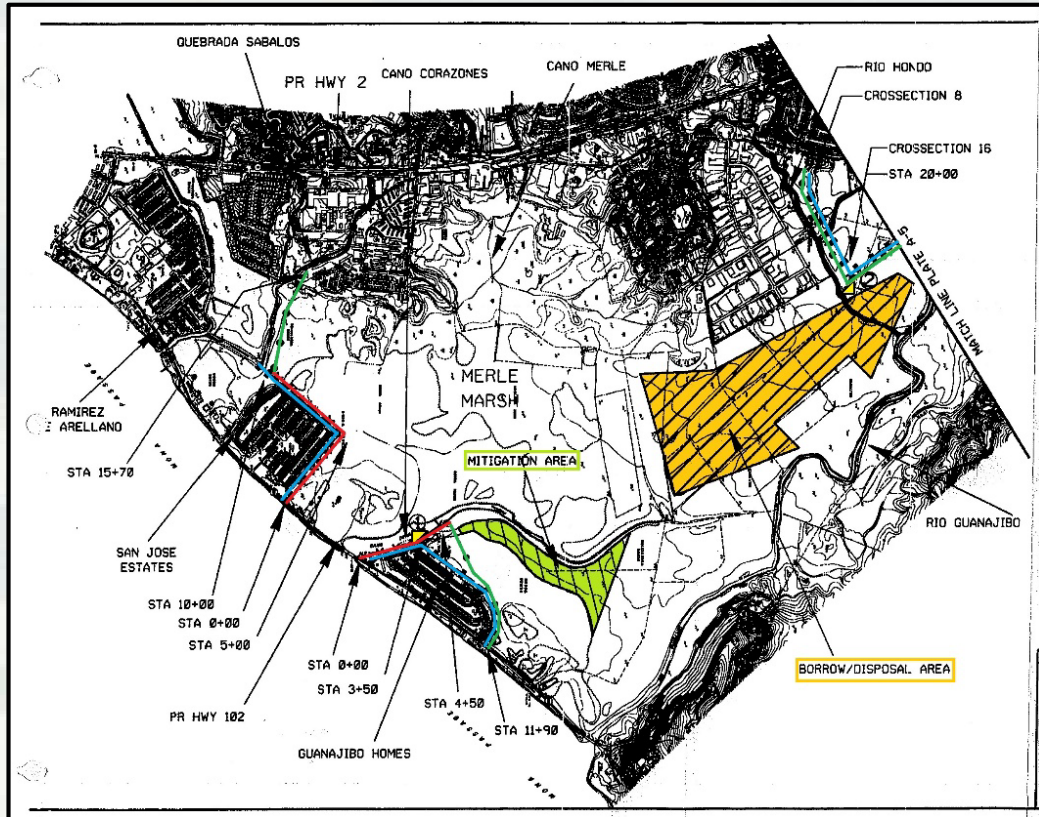


Contract 4 - Rio Grande de Loiza – From high ground between the Santa Elvira residential development and Monte Calvario Cementery extending along the western high bank of the Loiza River to end near the Villa Victoria residential development in the vicinity of the junction between the Loiza River and Turabo River.

- Approximately 1.8 miles of levees –
- 10.2 acres ponding area for four ponding areas
- Bicycle and pedestrian corridor between PR HWY 189 and Reparto las Mercedes Floodwall
- 1 Bridge Replacement
- Three flap-gated culverts
- Two Stilling Basins



Río Guanajibo at Mayaguez - Flood Control Project



Río Guanajibo at Mayaguez, PR - The recommended project includes a channel plan with a 10 year level of protection at San German in the upper basin and a system of levees that will provide 100 year protection for the urban areas at Hormigueros and Mayaguez in the lower basin.

- Sponsor - Puerto Rico Department of Natural and Environmental Resources
- Cost Estimate - \$200,000 for the validation report and \$60,000,000 project estimate (100% Federal)
- Project currently not Authorized

Contract 1 – Rio Guanajibo at Mayaguez

Approximately 3.89 miles of levees and floodwall –

- Guanajibo Homes and San Jose Area Levees & Floodwall: 2.0 miles
- Valle Hermoso Buenaventura areas Levees: 1.9 miles

Ditches –

- Provided to convey runoff collected behind the levees to culverts that would pass the flow

Mitigation –

- Loss of Habitat

Approximately 0.89 miles of channel improvements

- Channel: 0.89 miles with a 213 feet bottom, gabion lined



Río Niguas at Salinas Flood Control Project

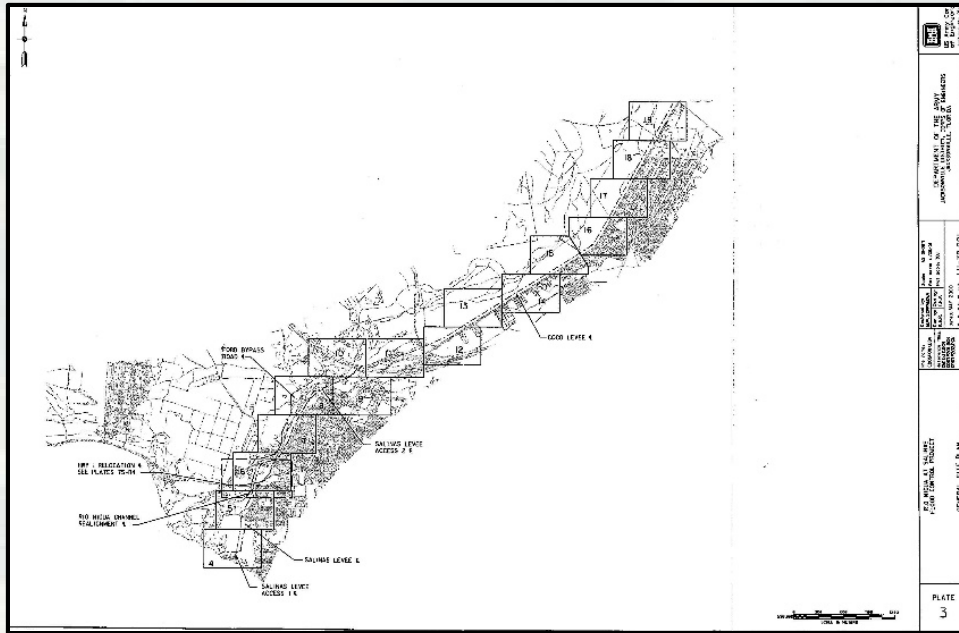
- **Río Niguas at Salinas, PR**- The recommended plan includes a 5.0 kilometer levee to protect El Coco community and a 3.1 kilometer levee/floodwall system to protect the town of Salinas and Playa de Salinas area. The latter portion of the project also includes relocating PR Hwy 1 Bridge, ramps, and local channel realignment.

- Sponsor - Puerto Rico Department of Natural and Environmental Resources
- Cost Estimate - \$200,000 for the validation report and \$60,000,000 project estimate (100% Federal)
- Project currently not Authorized

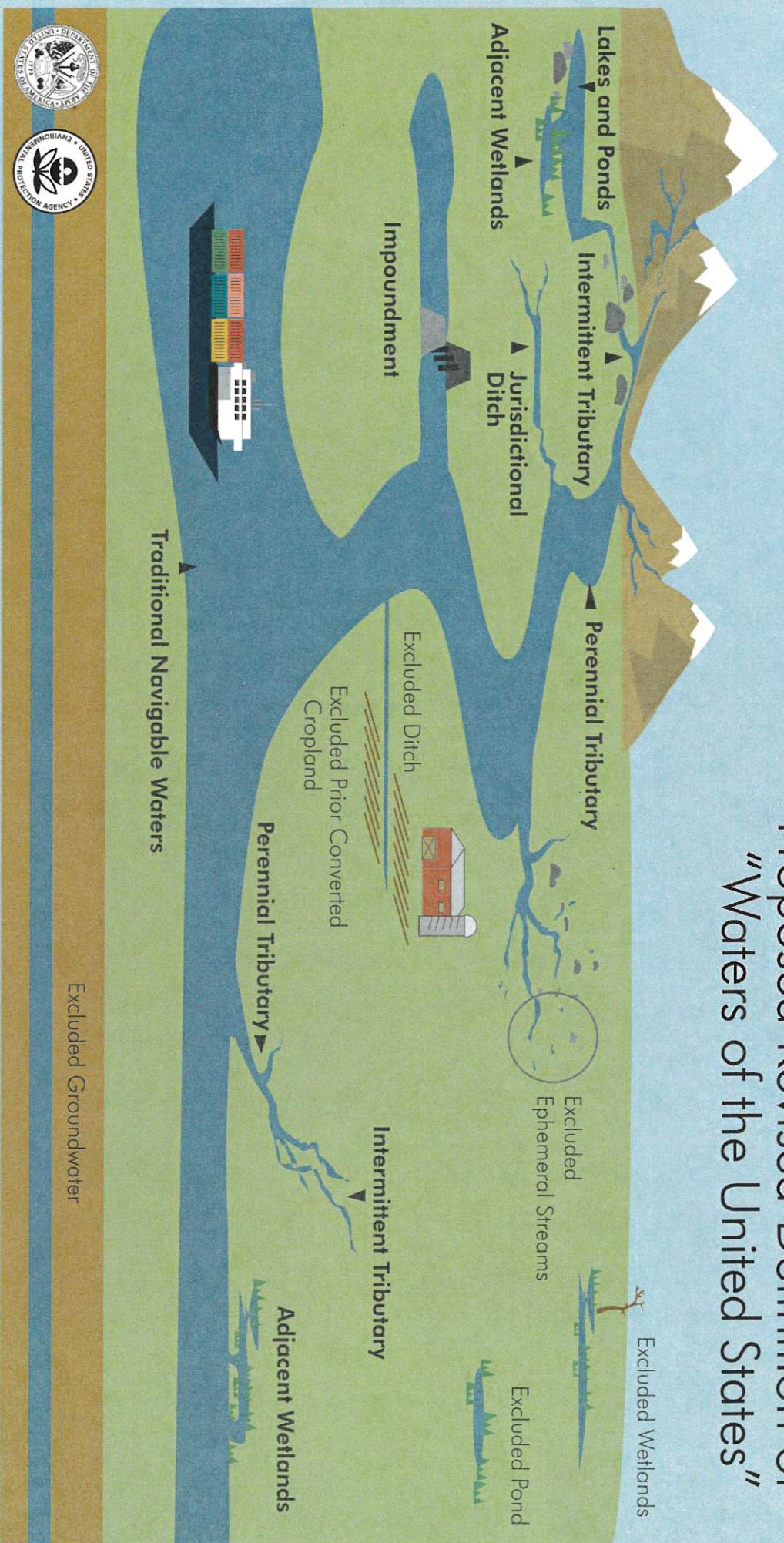
Contract 1 – Rio Niguas at Salinas, PR

Approximately 4.68 miles of levees and floodwall –

- The Salinas Levee: Protects the Town of Salinas and the Community of Playa de Salinas. Starts from the coastline and ends at the southeast abutment of the PR HWY 52 bridge over the Nigua River. Approximately 2.22 miles
- The Coco Levee: Protects the community of Coco. Starts at the southwest end of the community of Coco and ties into high grounds northeast of the community. Approximately 2.46 miles
- Channel re-alignment – at the intersection of the old railroad bridge & Rio Nigua and upstream of the PRH HWY 1 Bridge.
- Three flap-gated structures



Proposed Revised Definition of "Waters of the United States"



* For illustrative purposes only. Proposed jurisdictional waters in **bold**.



Step 2: Proposed Revised Definition of "Waters of the United States" Economic Analysis

BACKGROUND

- On December 11, 2018, the U.S. Environmental Protection Agency (EPA) and the Department of the Army (Army) proposed a new definition for "waters of the United States," which would establish the scope of federal regulatory authority under the Clean Water Act in a clear and understandable way.
- The agencies' proposal would help landowners better understand whether a project on his or her property would require a federal permit or not. As directed by the Clean Water Act, the agencies have proposed to limit where federal regulations apply and, as a result, give states and tribes more flexibility to determine how best to manage waters within their borders.
- Together, the agencies' proposed definition and existing state and tribal regulations and programs would provide a network of coverage for the nation's water resources in accordance with the objective and policies of the Clean Water Act.

ECONOMIC ANALYSIS

- EPA and the Army developed an illustrative economic analysis for the proposed rule that looks at the potential costs and benefits of the proposed changes to the definition of "waters of the United States" relative to existing regulations.
- EPA and the Army have identified, where possible, how the proposed definition might affect categories of water resources across the country and potential effects on Clean Water Act programs. The agencies have also identified data limitations that prevent quantitative national estimates for most Clean Water Act programs.
- The agencies confronted several data limitations that would not allow for a single quantitative cost-benefit analysis of the proposed rule relative to both the 2015 Rule baseline and the pre-2015 practice alternate baseline. Therefore, the agencies prepared a two-stage economic analysis of the proposal as described below.

Two-stage Analysis

- The agencies conducted a two-stage analysis of the proposed rule using available data to illustrate:
 - **Stage 1:** The change in costs and benefits between the 2015 Rule to the pre-2015 practice (i.e., the 1980s regulations by EPA and Corps as implemented consistent with Supreme Court decisions and informed by applicable guidance documents and longstanding agency practice), and
 - **Stage 2:** The change in costs and benefits between the pre-2015 practice to the current proposal.

Stage 1

- Comments on the proposal should be identified by Docket ID No. EPA-HQ-OW-2018-0149 and may be submitted online. Go to <https://www.regulations.gov> and follow the online instructions for submitting comments to Docket ID No. EPA-HQ-OW-2018-0149.
- For additional information, including the full EPA public comment policy, please visit <https://www.epa.gov/dockets/commenting-epa-dockets>.

FOR MORE INFORMATION

- Additional fact sheets along with copies of the proposed rule and supporting analyses are available on EPA's website at <https://www.epa.gov/wotus-rule>.